
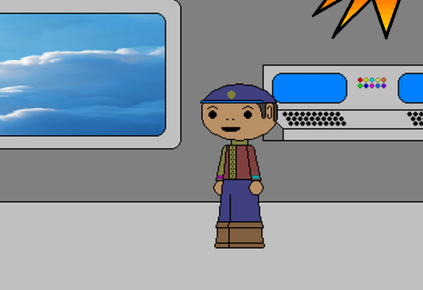




Sentinels of the Multiverse – Crossover Crisis (Ultimate Edition) – Environment deck: Cloud Capitán's Flying Fortress

CLOUD LIEUTENANT 



STAFF

AT THE END OF THE ENVIRONMENT TURN, REVEAL CARDS FROM THE TOP OF THE ENVIRONMENT DECK UNTIL A [STAFF] CARD IS REVEALED. PUT THE REVEALED [STAFF] CARD INTO PLAY, AND SHUFFLE THE OTHER REVEALED CARDS AND THE ENVIRONMENT TRASH INTO THE ENVIRONMENT DECK.

LIEUTENANT AMIR JAKARI, CLOUD CAPITÁN'S SECOND IN COMMAND AND CLOSEST FRIEND. AS SMART AS, AND POSSIBLY SMARTER THAN, HIS FRIEND AND BOSS, HE IS MUCH LESS CRAZY, WHICH MAKES HIM THAT MUCH MORE DANGEROUS.

SENTINELS

CROSSOVER CRISIS

Cloud Capitán's Flying Fortress

CLOUD GUARDS 



STAFF

AT THE END OF THE ENVIRONMENT TURN, THIS CARD DEALS THE 2 HERO TARGETS WITH HIGHEST HP X MELEE DAMAGE, WHERE X = 1 PLUS THE NUMBER OF CLOUD GUARD CARDS IN PLAY.

WHILE NOT PARTICULARLY TOUGH INDIVIDUALLY, THEY MAKE UP FOR IT WITH OVERWEALMING NUMBERS.

SENTINELS

CROSSOVER CRISIS

Cloud Capitán's Flying Fortress

CLOUD GUARDS 



STAFF

AT THE END OF THE ENVIRONMENT TURN, THIS CARD DEALS THE 2 HERO TARGETS WITH HIGHEST HP X MELEE DAMAGE, WHERE X = 1 PLUS THE NUMBER OF CLOUD GUARD CARDS IN PLAY.

WHILE NOT PARTICULARLY TOUGH INDIVIDUALLY, THEY MAKE UP FOR IT WITH OVERWEALMING NUMBERS.

SENTINELS

CROSSOVER CRISIS

Cloud Capitán's Flying Fortress

CLOUD GUARDS 



STAFF

AT THE END OF THE ENVIRONMENT TURN, THIS CARD DEALS THE 2 HERO TARGETS WITH HIGHEST HP X MELEE DAMAGE, WHERE X = 1 PLUS THE NUMBER OF CLOUD GUARD CARDS IN PLAY.

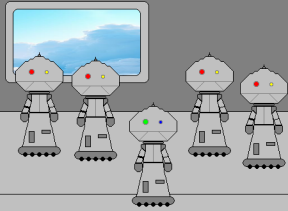
WHILE NOT PARTICULARLY TOUGH INDIVIDUALLY, THEY MAKE UP FOR IT WITH OVERWEALMING NUMBERS.

SENTINELS

CROSSOVER CRISIS

Cloud Capitán's Flying Fortress

A.C.G.U.



SENTINELS

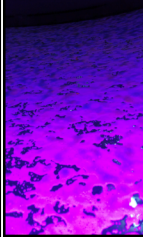
CROSSOVER CRISIS



STAFF

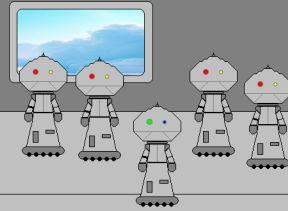
DAMAGE DEALT TO THIS TARGET IS REDUCED BY 1.
AT THE END OF THE ENVIRONMENT TURN, THIS TARGET DEALS ALL NON-[STAFF] TARGETS 2 IRREDUCIBLE PROJECTILE DAMAGE.

A.C.G.U.: ARMORED CLOUD GUARDIAN UNIT.



Cloud Capitán's Flying Fortress

A.C.G.U.



SENTINELS

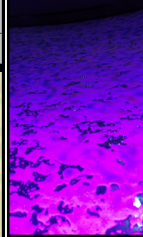
CROSSOVER CRISIS



STAFF

DAMAGE DEALT TO THIS TARGET IS REDUCED BY 1.
AT THE END OF THE ENVIRONMENT TURN, THIS TARGET DEALS ALL NON-[STAFF] TARGETS 2 IRREDUCIBLE PROJECTILE DAMAGE.

A.C.G.U.: ARMORED CLOUD GUARDIAN UNIT.



Cloud Capitán's Flying Fortress

NORTH MODULE



SENTINELS

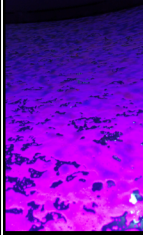
CROSSOVER CRISIS



ONE-SHOT, ZONE

DEAL EACH NON-[STAFF] TARGET 2 ENERGY AND 2 SONIC DAMAGE.

THE NORTH MODULE CONTAINS THE MAIN POWER SYSTEMS, COLLISION AVOIDANCE EQUIPMENT AND THE CLOUD GENERATORS. PERFECTLY SAFE TO WORK AROUND ... IF YOU'RE WEARING THE RIGHT PROTECTIVE GEAR.



Cloud Capitán's Flying Fortress

WEST MODULE



SENTINELS

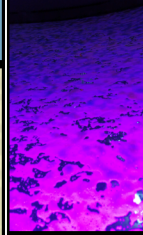
CROSSOVER CRISIS



ONE-SHOT, ZONE

RESTORE ALL [STAFF] TARGETS TO THEIR MAXIMUM HP.

THE WEST MODULE IS EFFECTIVELY ITS OWN CITY, COMPLETE WITH HOUSING UNITS, PARKS, SHOPS, RESTAURANTS, EVEN SCHOOLS AND CHURCHES.



Cloud Capitán's Flying Fortress

SOUTH MODULE



SENTINELS

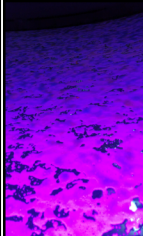
CROSSOVER
CRISIS



ONE-SHOT, ZONE

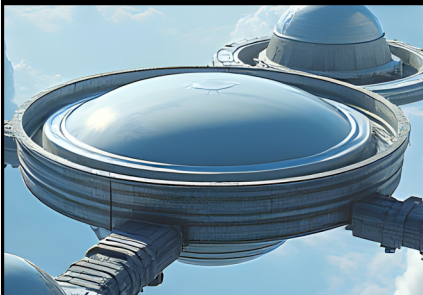
PLAY THE TOP (1)-2 CARDS OF THE VILLAIN DECK, ONE AT A TIME.

THE SOUTH MODULE IS THE COMMAND CENTER, BUT ALSO CONTAINED ALL OF CLOUD CAPITÁN'S RESEARCH FACILITIES, INCLUDING THE GENETICS LAB WHERE HE CREATED YAK GUARDIAN.



Cloud Capitán's Flying Fortress

CENTRAL HUB



SENTINELS

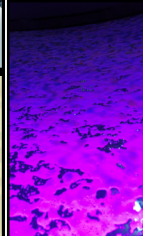
CROSSOVER
CRISIS



ONE-SHOT, ZONE

DESTROY (1) HERO NON-CHARACTER CARDS.

THE CENTRAL HUB WAS ONCE THE ENTIRETY OF THE FLYING FORTRESS, BUT SINCE THE ADDITION OF THE FOUR MODULES, IT HAS BECOME A MOSTLY ABANDONED SUPER-STRUCTURE OF DARK TWISTING CORRIDORS AND ABANDONED EQUIPMENT.



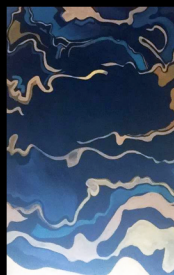
Cloud Capitán's Flying Fortress

EAST MODULE



SENTINELS

CROSSOVER
CRISIS

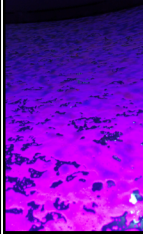


ONE-SHOT, ZONE

EACH PLAYER MAY DRAW UP TO 3 CARDS. WHENEVER A PLAYER DRAWS A CARD THIS WAY, INCREASE THE NEXT DAMAGE DEALT TO THEIR HERO BY X, WHERE X = THE NUMBER OF CARDS YOU'VE DRAWN THIS WAY.

THE ENVIRONMENT DEALS EACH HERO 0 FIRE DAMAGE.

WHEN CAPED COMMANDER SLAMMED INTO THE NEUTRON CANNON THAT WAS POISED TO KILL MILLIONS, HE ALSO SET INTO MOTION THE DESTRUCTION OF THE CONNECTOR BETWEEN THE EAST MODULE AND THE CENTRAL HUB, WHICH IN TURN DANGEROUSLY DESTABILIZED THE ENTIRE STRUCTURE.



Cloud Capitán's Flying Fortress