

**QUICK GETAWAY**

WHERE IS TOMBOY? THE LIEUTENANT WILL WANT TO THANK HER!  
THERE SHE GOES! WHAT A GIRL!

**ONE-SHOT**

DISCARD UP TO 3 CARDS, DRAW TWICE AS MANY CARDS AS WERE DISCARDED THIS WAY.

THERE SHE GOES! WHAT A GIRL!  
—PATROLMAN (CAPTAIN FLASH #2)

ART BY MORT MESKIN.

**SENTINELS**  
**CROSSOVER CRISIS**

**TOMBOY!**

**QUICK GETAWAY**

WHERE IS TOMBOY? THE LIEUTENANT WILL WANT TO THANK HER!  
THERE SHE GOES! WHAT A GIRL!

**ONE-SHOT**

DISCARD UP TO 3 CARDS, DRAW TWICE AS MANY CARDS AS WERE DISCARDED THIS WAY.

THERE SHE GOES! WHAT A GIRL!  
—PATROLMAN (CAPTAIN FLASH #2)

ART BY MORT MESKIN.

**SENTINELS**  
**CROSSOVER CRISIS**

**TOMBOY!**

**QUICK GETAWAY**

WHERE IS TOMBOY? THE LIEUTENANT WILL WANT TO THANK HER!  
THERE SHE GOES! WHAT A GIRL!

**ONE-SHOT**

DISCARD UP TO 3 CARDS, DRAW TWICE AS MANY CARDS AS WERE DISCARDED THIS WAY.

THERE SHE GOES! WHAT A GIRL!  
—PATROLMAN (CAPTAIN FLASH #2)

ART BY MORT MESKIN.

**SENTINELS**  
**CROSSOVER CRISIS**

**TOMBOY!**

**ATHLETICISM**

**ONGOING, LIMITED**

REDUCE DAMAGE DEALT TO TOMBOY BY 1.  
INCREASE DAMAGE DEALT BY TOMBOY TO NON-HERO TARGETS BY 1.

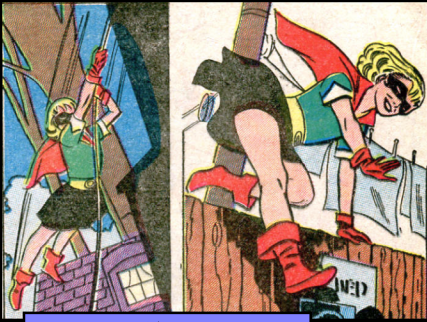
A MINUTE LATER, IN THE PRIVACY OF JANE JACKSON'S BEDROOM, AN AMAZING TRANSFORMATION INTO THE FAMED NEMESIS OF EVIL... TOMBOY!  
—CAPTION (CAPTAIN FLASH #4)

ART BY MORT MESKIN.

**SENTINELS**  
**CROSSOVER CRISIS**

**TOMBOY!**

### ATHLETICISM



ONGOING, LIMITED

REDUCE DAMAGE DEALT TO TOMBOY BY 1.

INCREASE DAMAGE DEALT BY TOMBOY TO NON-HERO TARGETS BY 1.

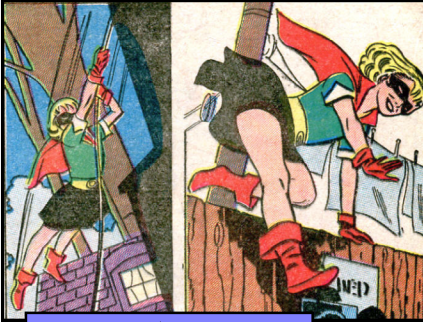
A MINUTE LATER, IN THE PRIVACY OF JANIS JACKSON'S BEDROOM, AN AMAZING TRANSFORMATION INTO THE FAMED NEMESIS OF EVIL... TOMBOY!  
—CAPTION (CAPTAIN FLASH #8)

ART BY MORT MESKIN.

## SENTINELS CROSSOVER CRISIS

### TOMBOY!

### ATHLETICISM



ONGOING, LIMITED

REDUCE DAMAGE DEALT TO TOMBOY BY 1.

INCREASE DAMAGE DEALT BY TOMBOY TO NON-HERO TARGETS BY 1.

A MINUTE LATER, IN THE PRIVACY OF JANIS JACKSON'S BEDROOM, AN AMAZING TRANSFORMATION INTO THE FAMED NEMESIS OF EVIL... TOMBOY!  
—CAPTION (CAPTAIN FLASH #8)

ART BY MORT MESKIN.

## SENTINELS CROSSOVER CRISIS

### TOMBOY!

### ACROBATIC ESCAPE



THERE BETTER BE SOMETHING FOR ME TO HANG ON!

ONGOING, LIMITED

WHEN TOMBOY WOULD BE DEALT 5 OR MORE DAMAGE, PREVENT THAT DAMAGE AND DESTROY THIS CARD.

QUICKLY TURNING, TOMBOY SENDS HER TRAINED BODY INTO A FLIP THAT CARRIES HER TO THE UNDER-CARRIAGE OF THE PLANE...  
—CAPTION (CAPTAIN FLASH #1)

ART BY MORT MESKIN.

## SENTINELS CROSSOVER CRISIS

### TOMBOY!

### ACROBATIC ESCAPE



THERE BETTER BE SOMETHING FOR ME TO HANG ON!

ONGOING, LIMITED

WHEN TOMBOY WOULD BE DEALT 5 OR MORE DAMAGE, PREVENT THAT DAMAGE AND DESTROY THIS CARD.

QUICKLY TURNING, TOMBOY SENDS HER TRAINED BODY INTO A FLIP THAT CARRIES HER TO THE UNDER-CARRIAGE OF THE PLANE...  
—CAPTION (CAPTAIN FLASH #1)

ART BY MORT MESKIN.

## SENTINELS CROSSOVER CRISIS

### TOMBOY!

**ACROBATIC ESCAPE**



ONGOING, LIMITED

WHEN TOMBOY WOULD BE DEALT 5 OR MORE DAMAGE, PREVENT THAT DAMAGE AND DESTROY THIS CARD.

QUICKLY TURNING, TOMBOY SENDS HER TRAINED BODY INTO A FLIP THAT CARRIES HER TO THE UNDER-CARRIAGE OF THE PLANE...

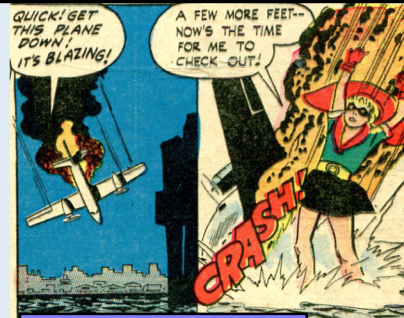
—CAPTION (CAPTAIN FLASH #1)

ART BY MORT MESKIN.

**SENTINELS CROSSOVER CRISIS**

**TOMBOY!**

**SABOTAGING EVIL SCHEMES**



ONE-SHOT

DESTROY AN ONGOING CARD OR A NON-TARGET ENVIRONMENT CARD.

I CAN'T LET THEM DROP THOSE INCENDIARY BOMBS! I JUST CAN'T!

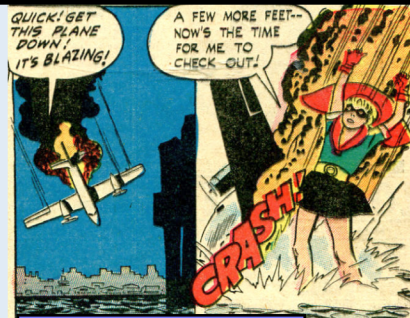
—TOMBOY (CAPTAIN FLASH #1)

ART BY MORT MESKIN.

**SENTINELS CROSSOVER CRISIS**

**TOMBOY!**

**SABOTAGING EVIL SCHEMES**



ONE-SHOT

DESTROY AN ONGOING CARD OR A NON-TARGET ENVIRONMENT CARD.

I CAN'T LET THEM DROP THOSE INCENDIARY BOMBS! I JUST CAN'T!

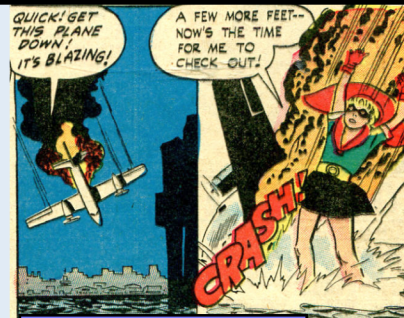
—TOMBOY (CAPTAIN FLASH #1)

ART BY MORT MESKIN.

**SENTINELS CROSSOVER CRISIS**

**TOMBOY!**

**SABOTAGING EVIL SCHEMES**



ONE-SHOT

DESTROY AN ONGOING CARD OR A NON-TARGET ENVIRONMENT CARD.

I CAN'T LET THEM DROP THOSE INCENDIARY BOMBS! I JUST CAN'T!

—TOMBOY (CAPTAIN FLASH #1)

ART BY MORT MESKIN.

**SENTINELS CROSSOVER CRISIS**

**TOMBOY!**

### SEARCH FOR CLUES



#### ONE-SHOT

REVEAL THE TOP 3 CARDS OF ANY DECK, REPLACE THE CARDS IN ANY ORDER.

IF IT WAS A HERO DECK, THAT HERO'S PLAYER MAY DRAW A CARD.

IF IT WASN'T A HERO DECK, YOU MAY PLAY OR DISCARD THE TOP CARD OF THAT DECK.

AT ANY RATE, IT WON'T HURT IF TOMBOY TUNES INTO GRANDPA SANDER'S TROUBLE!  
--TOMBOY (CAPTAIN FLASH #2)

ART BY EDVARD MORITZ.

## SENTINELS CROSSOVER CRISIS

### TOMBOY!

### SEARCH FOR CLUES



#### ONE-SHOT

REVEAL THE TOP 3 CARDS OF ANY DECK, REPLACE THE CARDS IN ANY ORDER.

IF IT WAS A HERO DECK, THAT HERO'S PLAYER MAY DRAW A CARD.

IF IT WASN'T A HERO DECK, YOU MAY PLAY OR DISCARD THE TOP CARD OF THAT DECK.

AT ANY RATE, IT WON'T HURT IF TOMBOY TUNES INTO GRANDPA SANDER'S TROUBLE!  
--TOMBOY (CAPTAIN FLASH #2)

ART BY EDVARD MORITZ.

## SENTINELS CROSSOVER CRISIS

### TOMBOY!

### SEARCH FOR CLUES



#### ONE-SHOT

REVEAL THE TOP 3 CARDS OF ANY DECK, REPLACE THE CARDS IN ANY ORDER.

IF IT WAS A HERO DECK, THAT HERO'S PLAYER MAY DRAW A CARD.

IF IT WASN'T A HERO DECK, YOU MAY PLAY OR DISCARD THE TOP CARD OF THAT DECK.

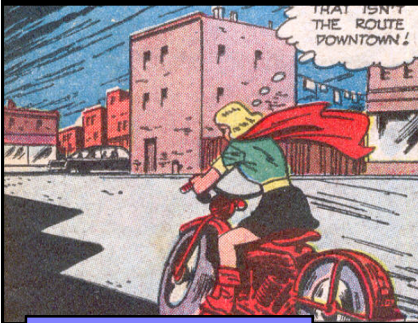
AT ANY RATE, IT WON'T HURT IF TOMBOY TUNES INTO GRANDPA SANDER'S TROUBLE!  
--TOMBOY (CAPTAIN FLASH #2)

ART BY EDVARD MORITZ.

## SENTINELS CROSSOVER CRISIS

### TOMBOY!

### BORROWED MOTORCYCLE



#### EQUIPMENT, LIMITED

POWER: MOVE AN ENVIRONMENT CARD FROM IN PLAY TO THE BOTTOM OF THE ENVIRONMENT DECK. PLAY THE TOP CARD OF THE ENVIRONMENT DECK. DESTROY THIS CARD.

WHEN THIS CARD IS DESTROYED, DRAW A CARD.

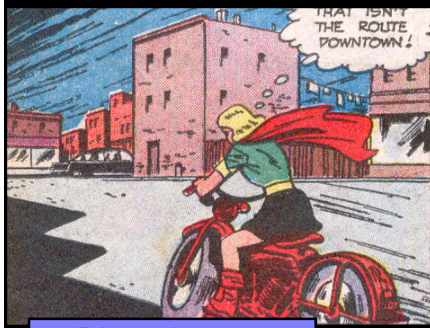
I GUESS IT'S TIME FOR TOMBOY TO PAY A LITTLE VISIT TO THE CLUMP!  
--TOMBOY (CAPTAIN FLASH#1)

ART BY EDVARD MORITZ.

## SENTINELS CROSSOVER CRISIS

### TOMBOY!

### BORROWED MOTORCYCLE



EQUIPMENT, LIMITED

POWER: MOVE AN ENVIRONMENT CARD FROM IN PLAY TO THE BOTTOM OF THE ENVIRONMENT DECK. PLAY THE TOP CARD OF THE ENVIRONMENT DECK. DESTROY THIS CARD.

WHEN THIS CARD IS DESTROYED, DRAW A CARD.

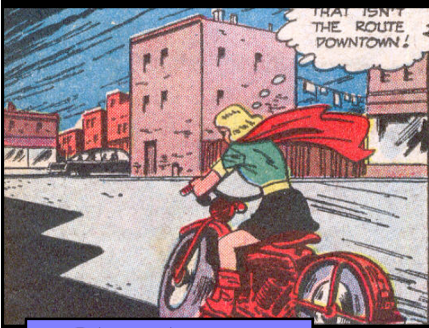
I GUESS IT'S TIME FOR TOMBOY TO PAY A LITTLE VISIT TO THE CLAW!  
—TOMBOY (CAPTAIN FLASH#1)

ART BY EDVARD MORITZ.

## SENTINELS CROSSOVER CRISIS

### TOMBOY!

### BORROWED MOTORCYCLE



EQUIPMENT, LIMITED

POWER: MOVE AN ENVIRONMENT CARD FROM IN PLAY TO THE BOTTOM OF THE ENVIRONMENT DECK. PLAY THE TOP CARD OF THE ENVIRONMENT DECK. DESTROY THIS CARD.

WHEN THIS CARD IS DESTROYED, DRAW A CARD.

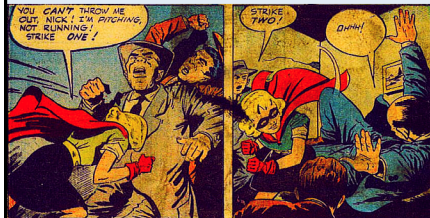
I GUESS IT'S TIME FOR TOMBOY TO PAY A LITTLE VISIT TO THE CLAW!  
—TOMBOY (CAPTAIN FLASH#1)

ART BY EDVARD MORITZ.

## SENTINELS CROSSOVER CRISIS

### TOMBOY!

### OUTNUMBERED



ONGOING

YOU MAY USE AN ADDITIONAL POWER DURING YOUR POWER PHASE. IF YOU DO, DISCARD A CARD OR DESTROY THIS CARD.

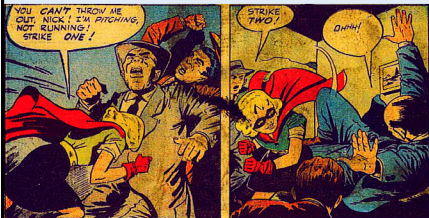
STRIKE ONE! STRIKE TWO!  
—TOMBOY (CAPTAIN FLASH #4)

ART BY EDVARD MORITZ.

## SENTINELS CROSSOVER CRISIS

### TOMBOY!

### OUTNUMBERED



ONGOING

YOU MAY USE AN ADDITIONAL POWER DURING YOUR POWER PHASE. IF YOU DO, DISCARD A CARD OR DESTROY THIS CARD.

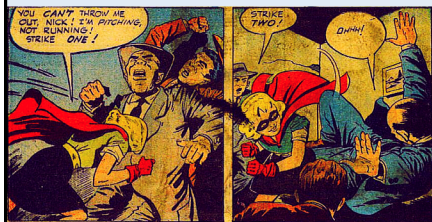
STRIKE ONE! STRIKE TWO!  
—TOMBOY (CAPTAIN FLASH #4)

ART BY EDVARD MORITZ.

## SENTINELS CROSSOVER CRISIS

### TOMBOY!

### OUTNUMBERED



ONGOING

YOU MAY USE AN ADDITIONAL POWER DURING YOUR POWER PHASE. IF YOU DO, DISCARD A CARD OR DESTROY THIS CARD.

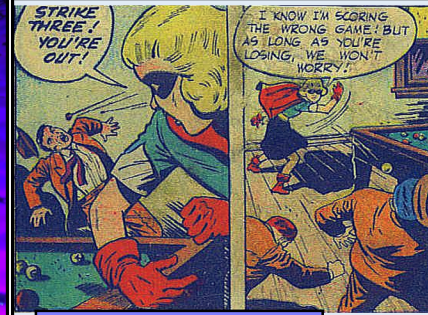
STRIKE ONE! STRIKE TWO!  
—TOMBOY (CAPTAIN FLASH #4)

ART BY EDVARD MORITZ.

## SENTINELS CROSSOVER CRISIS

### TOMBOY!

### IMPROVISED PROJECTILE



ONGOING, LIMITED

POWER: TOMBOY DEALS 1 TARGET 2 IRREDUCIBLE PROJECTILE DAMAGE.

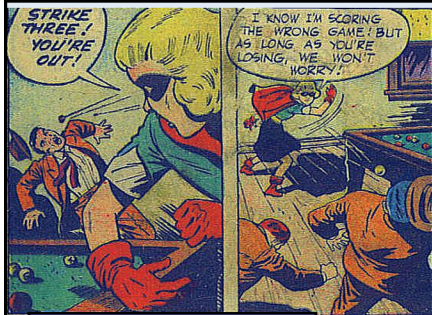
STRIKE THREE! YOU'RE OUT! I KNOW I'M SCORING THE WRONG GAME! BUT AS LONG AS YOU'RE LOSING, WE WON'T WORRY!  
—TOMBOY (CAPTAIN FLASH #4)

ART BY EDVARD MORITZ.

## SENTINELS CROSSOVER CRISIS

### TOMBOY!

### IMPROVISED PROJECTILE



ONGOING, LIMITED

POWER: TOMBOY DEALS 1 TARGET 2 IRREDUCIBLE PROJECTILE DAMAGE.

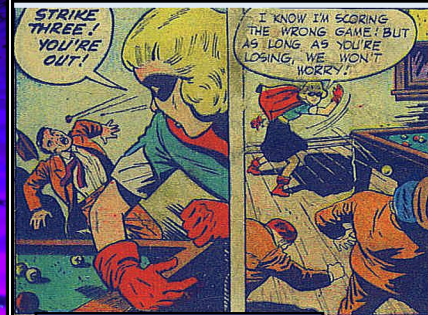
STRIKE THREE! YOU'RE OUT! I KNOW I'M SCORING THE WRONG GAME! BUT AS LONG AS YOU'RE LOSING, WE WON'T WORRY!  
—TOMBOY (CAPTAIN FLASH #4)

ART BY EDVARD MORITZ.

## SENTINELS CROSSOVER CRISIS

### TOMBOY!

### IMPROVISED PROJECTILE



ONGOING, LIMITED

POWER: TOMBOY DEALS 1 TARGET 2 IRREDUCIBLE PROJECTILE DAMAGE.

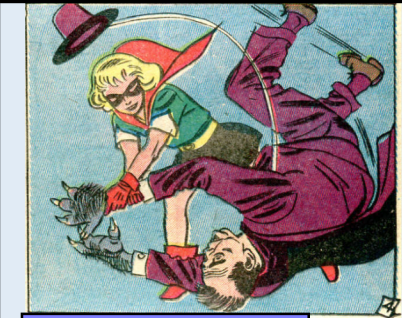
STRIKE THREE! YOU'RE OUT! I KNOW I'M SCORING THE WRONG GAME! BUT AS LONG AS YOU'RE LOSING, WE WON'T WORRY!  
—TOMBOY (CAPTAIN FLASH #4)

ART BY EDVARD MORITZ.

## SENTINELS CROSSOVER CRISIS

### TOMBOY!

COUNTERSTRIKE: BODYSLAM



ONGOING, LIMITED

THE FIRST TIME EACH TURN THAT TOMBOY IS DEALT DAMAGE BY A NON-HERO TARGET, SHE DEALS THE SOURCE OF THAT DAMAGE 2 MELEE DAMAGE.

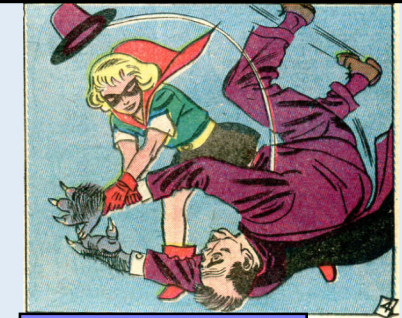
UH-OH...!  
--TOMBOY (CAPTAIN FLASH #1)

ART BY MORT MESKIN.

SENTINELS  
CROSSOVER CRISIS

TOMBOY!

COUNTERSTRIKE: BODYSLAM



ONGOING, LIMITED

THE FIRST TIME EACH TURN THAT TOMBOY IS DEALT DAMAGE BY A NON-HERO TARGET, SHE DEALS THE SOURCE OF THAT DAMAGE 2 MELEE DAMAGE.

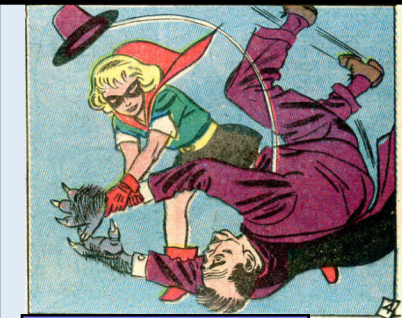
UH-OH...!  
--TOMBOY (CAPTAIN FLASH #1)

ART BY MORT MESKIN.

SENTINELS  
CROSSOVER CRISIS

TOMBOY!

COUNTERSTRIKE: BODYSLAM



ONGOING, LIMITED

THE FIRST TIME EACH TURN THAT TOMBOY IS DEALT DAMAGE BY A NON-HERO TARGET, SHE DEALS THE SOURCE OF THAT DAMAGE 2 MELEE DAMAGE.

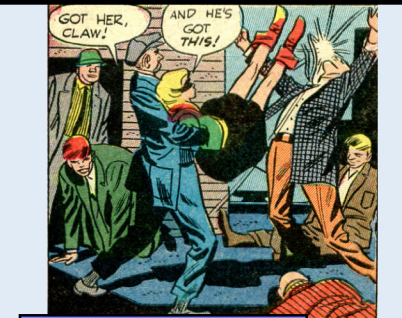
UH-OH...!  
--TOMBOY (CAPTAIN FLASH #1)

ART BY MORT MESKIN.

SENTINELS  
CROSSOVER CRISIS

TOMBOY!

TOMBOY KICK



ONGOING, LIMITED

POWER: TOMBOY DEALS UP TO 2 TARGETS 2 MELEE DAMAGE.

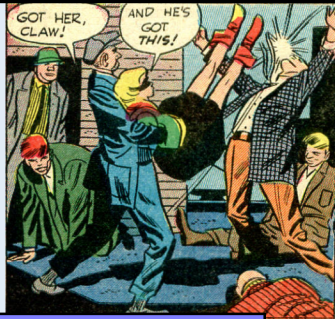
GOT HER CLAW! --THUG  
AND HE'S GOT THIS! --TOMBOY  
(CAPTAIN FLASH #1)

ART BY MORT MESKIN.

SENTINELS  
CROSSOVER CRISIS

TOMBOY!

### TOMBOY KICK



ONGOING, LIMITED

POWER: TOMBOY DEALS UP TO 2 TARGETS 2 MELEE DAMAGE.

GOT HER, CLAW! --THUS AND HE'S GOT THIS! --TOMBOY (CAPTAIN FLASH #1)

ART BY MORT MESKIN.

## SENTINELS CROSSOVER CRISIS

### TOMBOY!

### TOMBOY KICK



ONGOING, LIMITED

POWER: TOMBOY DEALS UP TO 2 TARGETS 2 MELEE DAMAGE.

GOT HER, CLAW! --THUS AND HE'S GOT THIS! --TOMBOY (CAPTAIN FLASH #1)

ART BY MORT MESKIN.

## SENTINELS CROSSOVER CRISIS

### TOMBOY!

### TRADE MARK PUNCH



ONGOING, LIMITED

POWER: TOMBOY DEALS 1 TARGET 3 MELEE DAMAGE.

THAT'S WHAT THEY CALL ME -- AND HERE'S MY TRADE MARK! --TOMBOY (CAPTAIN FLASH #1)

ART BY MORT MESKIN.

## SENTINELS CROSSOVER CRISIS

### TOMBOY!

### TRADE MARK PUNCH



ONGOING, LIMITED

POWER: TOMBOY DEALS 1 TARGET 3 MELEE DAMAGE.

THAT'S WHAT THEY CALL ME -- AND HERE'S MY TRADE MARK! --TOMBOY (CAPTAIN FLASH #1)

ART BY MORT MESKIN.

## SENTINELS CROSSOVER CRISIS

### TOMBOY!



### TRADE MARK PUNCH



ONGOING, LIMITED

POWER: TOMBOY DEALS 1 TARGET 3 MELEE DAMAGE.

THAT'S WHAT THEY CALL ME - AND HERE'S MY TRADE MARK!  
-TOMBOY (CAPTAIN FLASH #1)

ART BY MORT MESKIN.

## SENTINELS CROSSOVER CRISIS

**TOMBOY!**

### KNOCK-OUT BLOW



ONE-SHOT

TOMBOY DEALS 1 TARGET 2 MELEE DAMAGE.

IF DAMAGE WAS DEALT, THAT TARGET DEALS ANOTHER TARGET 2 MELEE DAMAGE.

I DON'T LIKE BEING PUSHED AROUND, RAT!  
-TOMBOY (CAPTAIN FLASH #1)

ART BY MORT MESKIN.

## SENTINELS CROSSOVER CRISIS

**TOMBOY!**

### KNOCK-OUT BLOW



ONE-SHOT

TOMBOY DEALS 1 TARGET 2 MELEE DAMAGE.

IF DAMAGE WAS DEALT, THAT TARGET DEALS ANOTHER TARGET 2 MELEE DAMAGE.

I DON'T LIKE BEING PUSHED AROUND, RAT!  
-TOMBOY (CAPTAIN FLASH #1)

ART BY MORT MESKIN.

## SENTINELS CROSSOVER CRISIS

**TOMBOY!**

### KNOCK-OUT BLOW



ONE-SHOT

TOMBOY DEALS 1 TARGET 2 MELEE DAMAGE.

IF DAMAGE WAS DEALT, THAT TARGET DEALS ANOTHER TARGET 2 MELEE DAMAGE.

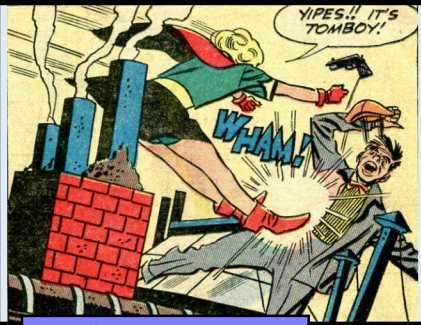
I DON'T LIKE BEING PUSHED AROUND, RAT!  
-TOMBOY (CAPTAIN FLASH #1)

ART BY MORT MESKIN.

## SENTINELS CROSSOVER CRISIS

**TOMBOY!**

FLYING JUMP-KICK



ONE-SHOT

TOMBOY DEALS 1 TARGET 4 MELEE DAMAGE.

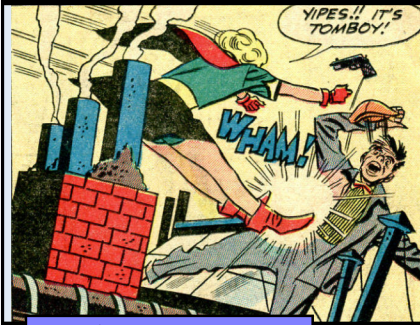
YIPES!! IT'S TOMBOY!  
—THUG (CAPTAIN FLASH #1)

ART BY MORT MESKIN.

SENTINELS  
CROSSOVER CRISIS

TOMBOY!

FLYING JUMP-KICK



ONE-SHOT

TOMBOY DEALS 1 TARGET 4 MELEE DAMAGE.

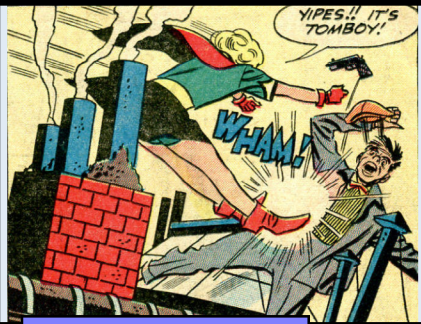
YIPES!! IT'S TOMBOY!  
—THUG (CAPTAIN FLASH #1)

ART BY MORT MESKIN.

SENTINELS  
CROSSOVER CRISIS

TOMBOY!

FLYING JUMP-KICK



ONE-SHOT

TOMBOY DEALS 1 TARGET 4 MELEE DAMAGE.

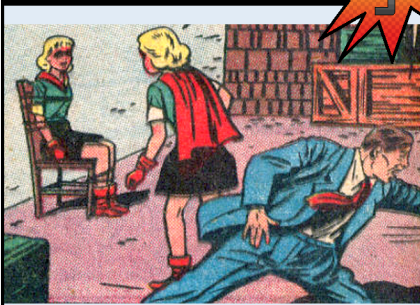
YIPES!! IT'S TOMBOY!  
—THUG (CAPTAIN FLASH #1)

ART BY MORT MESKIN.

SENTINELS  
CROSSOVER CRISIS

TOMBOY!

UNWANTED DECOY



JEALOUS CLASSMATE

WHEN DAMAGE WOULD BE DEALT TO TOMBOY, REDIRECT IT TO THIS CARD.

YOU SILLY GOOSE, YOU MIGHT HAVE PAID FOR THIS  
IMPERSONATION WITH YOUR LIFE!  
—TOMBOY (CAPTAIN FLASH #3)

ART BY EDVARD MORITZ.

SENTINELS  
CROSSOVER CRISIS

TOMBOY!

ART BY JOHN ELLIS

**TOMBOY!**

RIFT COMICS

30



THINKING ON HER FEET

POWER: TOMBOY DEALS 1 TARGET 1 MELEE DAMAGE. DRAW A CARD.

TOMBOY CREATED BY MORT MESKIN. SOTM DECK BY YAK GUARDIAN.

**TOMBOY!**

SUDDENLY, THE SIDE OF A PARKED REPAIR TRUCK GOES DOWN. A BLAST OF SOUND HITS THE REELING FIGURES ON THE LAWN.

(GASP!) MY EARS! I-I CAN'T HEAR! I-I CAN'T THINK!

WHAA! WHAAA!

GET 'EM BOYS!

⇒ 1 HERO DEALS A TARGET 1 DAMAGE OF ANY TYPE LISTED ON ANY CARD IN THEIR DECK.

⇒ 1 PLAYER MAY PLAY A CARD.

⇒ DESTROY AN ONGOING CARD OR A NON-TARGET ENVIRONMENT CARD.

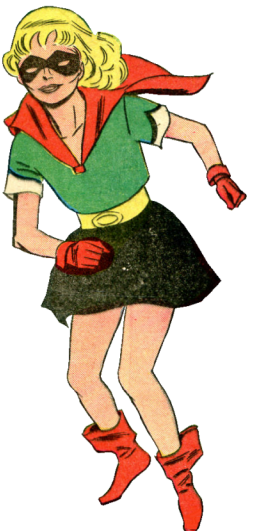
ART BY EDVARD MORITZ.

ART BY MORT MESKIN.

RIFT COMICS

28

**TOMBOY!**



THINKING ON HER FEET

POWER: DRAW A CARD OR PLAY A CARD.

TOMBOY CREATED BY MORT MESKIN. SOTM DECK BY YAK GUARDIAN.

**Incapacitated!**

YOU WALKED RIGHT INTO MY TRAP, TOMBOY! I FOUND THAT ANY WORD TO LIEUTENANT JACKSON ABOUT CRIME ALWAYS BRING YOU ON THE RUN!

LET'S GET HER OUT OF HERE BEFORE THE POLICE ARRIVE!

⇒ ONE HERO MAY USE A POWER.

⇒ DESTROY A VILLAIN NON-CHARACTER CARD.

⇒ ONE HERO REGAINS X HP WHERE X = THE NUMBER OF INCAPACITATED HEROES.

ART BY MORT MESKIN.

ART BY YAK GUARDIAN

RIFT COMICS

28

**TOMBOY!**




WHAT A GIRL!

POWER: TOMBOY DEALS 1 TARGET 2 MELEE DAMAGE.

TOMBOY CREATED BY MORT MESKIN. SOTM DECK BY YAK GUARDIAN.

**Incapacitated!**



⇒ ONE HERO MAY USE A POWER.

⇒ DESTROY A VILLAIN NON-CHARACTER CARD.

⇒ ONE HERO REGAINS X HP WHERE X = THE NUMBER OF INCAPACITATED HEROES.



If you're a comic book fan, go look up Mort Meskin. He was one of the giants of the Golden Age and doesn't get the recognition he deserves. (Tomboy is believed to be the first teenage female superhero who was NOT another hero's sidekick.)